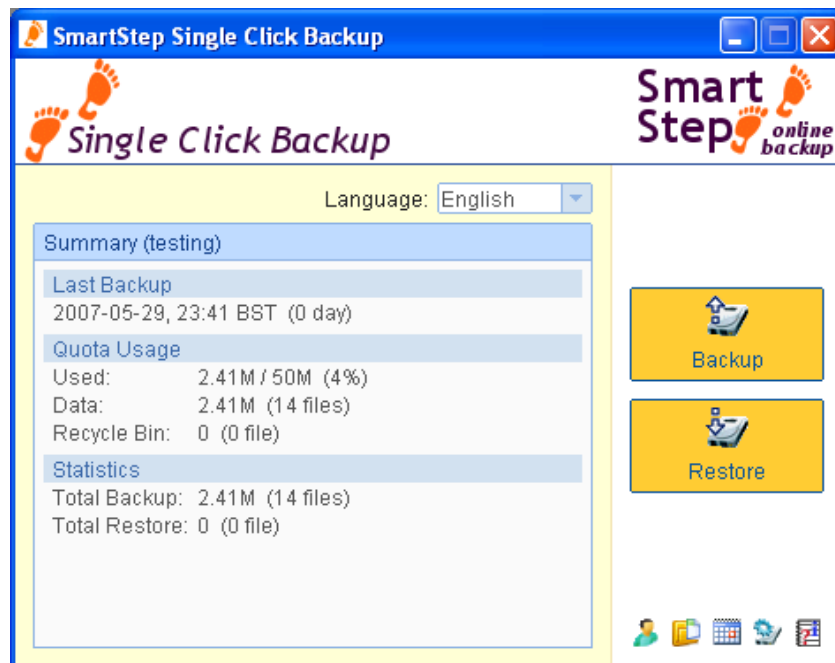




Installation and setup instructions



SmartStep Single Click Backup

Installation

Before you install any software you should ensure that your system is fully updated. Any antivirus software should be disabled during the installation and no other applications should be running. The software should be installed under a login that has administrator privileges.

Note: Remote installation can be performed for you.

See <http://www.smartstepbackup.co.uk/> for further details.

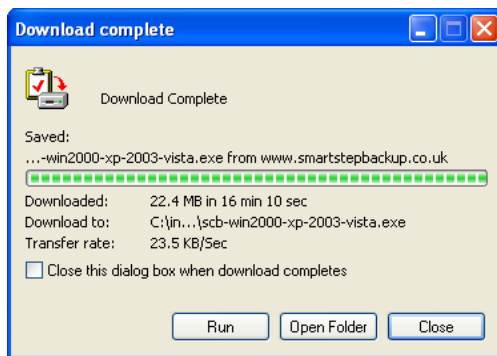
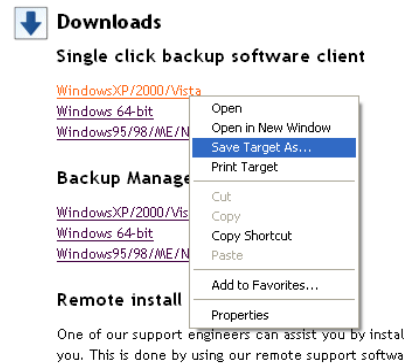
Download the single click backup software, saving it to a location on your hard disk.

<http://www.smartstepbackup.co.uk/downloads>

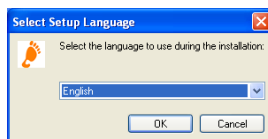
To download from the web site, right click on the link and select "Save Target As..."

Ensure you download the correct back up software for your operating system.

Downloads



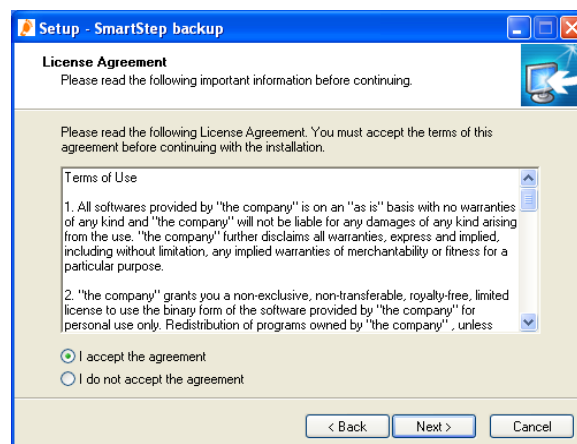
Run the software, either by clicking "Run" after the software has downloaded or by double clicking the icon of the downloaded file. If you receive a security warning, click "Run".



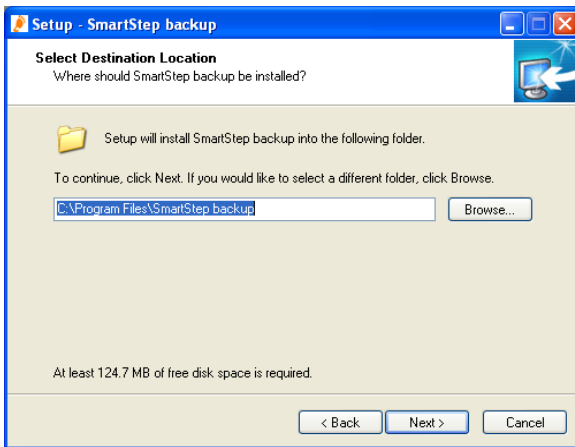
You will be asked to choose the language to be used for the installation. Click "OK".



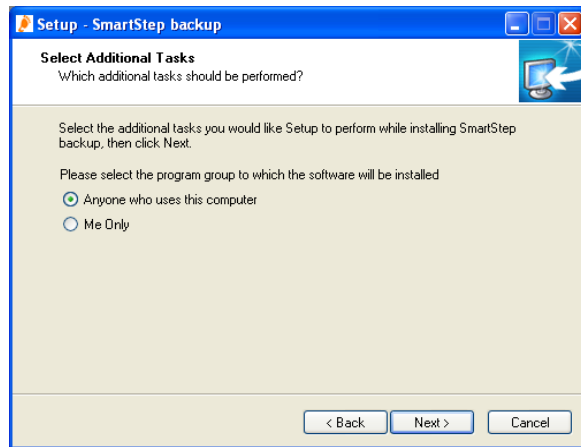
You will then see the Setup wizard. Click "Next".



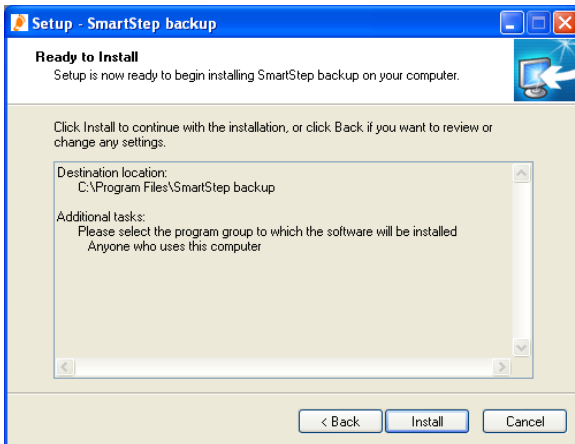
You will see the License agreement which you are required to accept to continue. Review the license and if you agree, click "I accept the agreement" and then Next.



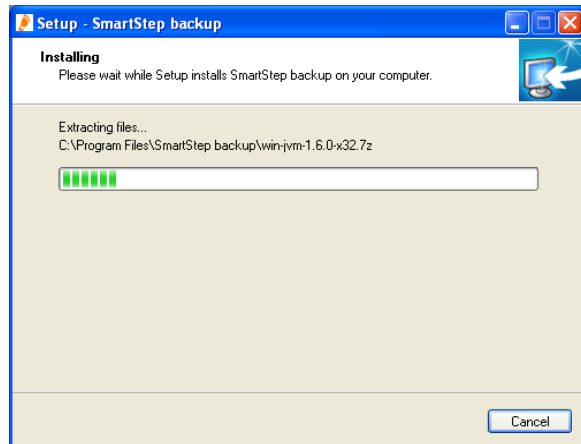
Select an appropriate location to install the software to. The default should be fine.



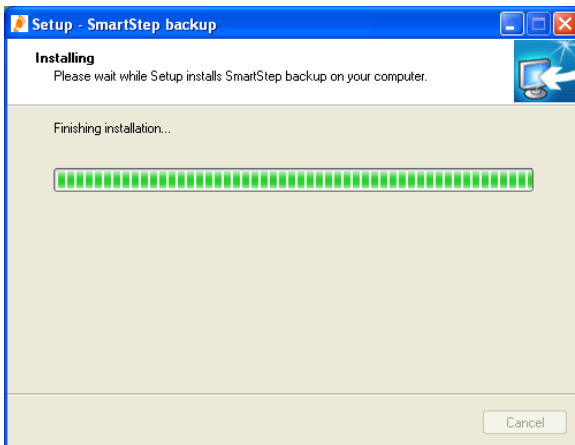
Choose whether all users of the computer should be able to use the software or just the current user. The default of "Anyone who uses this computer" should be fine in most cases.



You are now ready to install the software. Review the options you have chosen and click "Install".



You will see a progress bar.

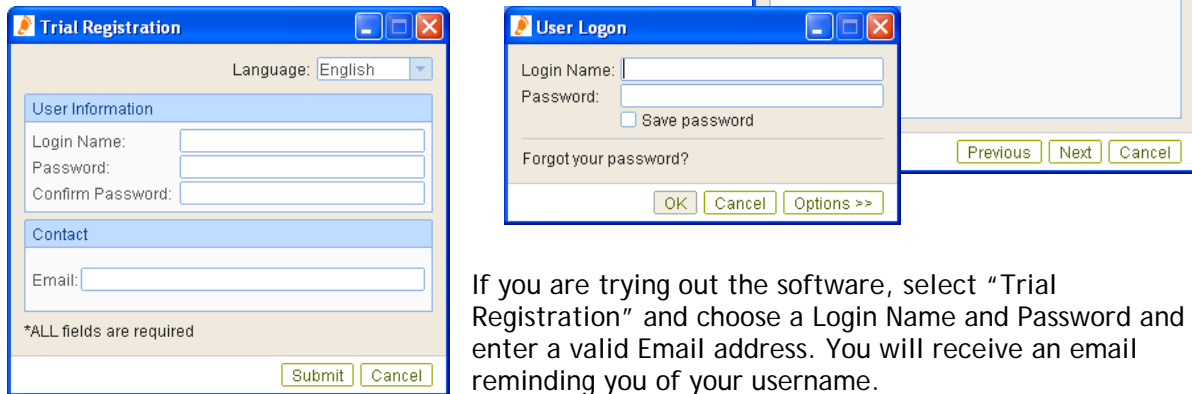


When the installation is complete click "Finish".

Running the software for the first time

When you first run the software you will be asked to select "User Logon" or "Trial Registration".

If you have purchased a subscription you should select "User Logon" and enter the details you entered when you activated your account (Login name and password).

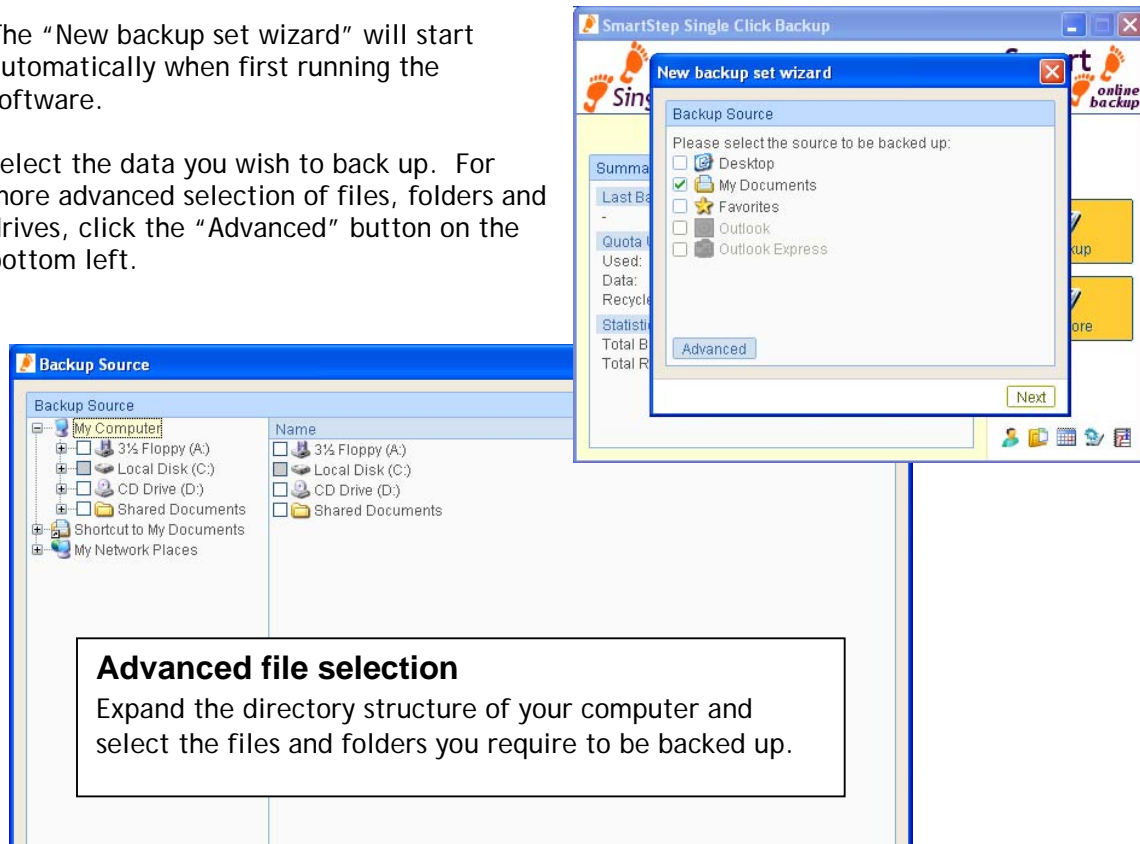


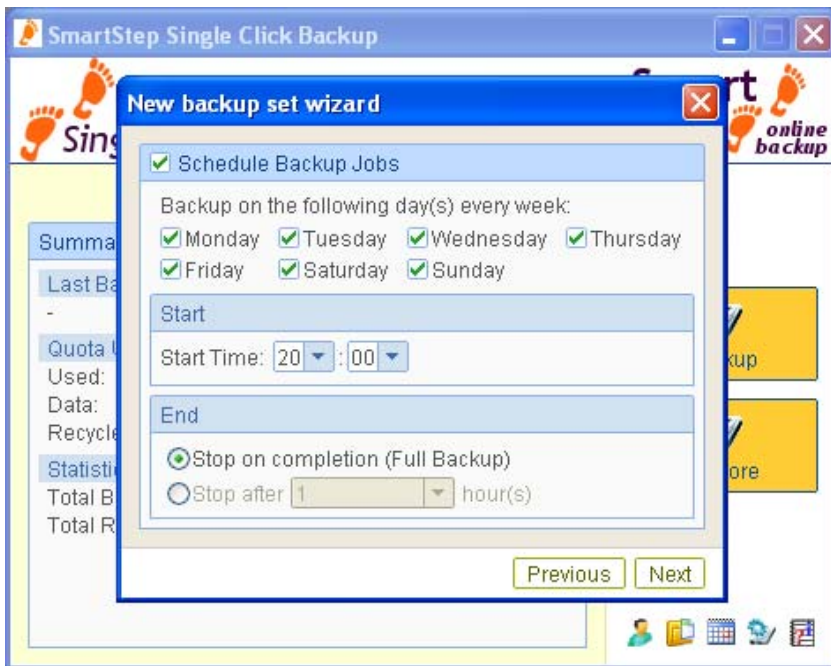
If you are trying out the software, select "Trial Registration" and choose a Login Name and Password and enter a valid Email address. You will receive an email reminding you of your username.

Creating a backup set

The "New backup set wizard" will start automatically when first running the software.

Select the data you wish to back up. For more advanced selection of files, folders and drives, click the "Advanced" button on the bottom left.

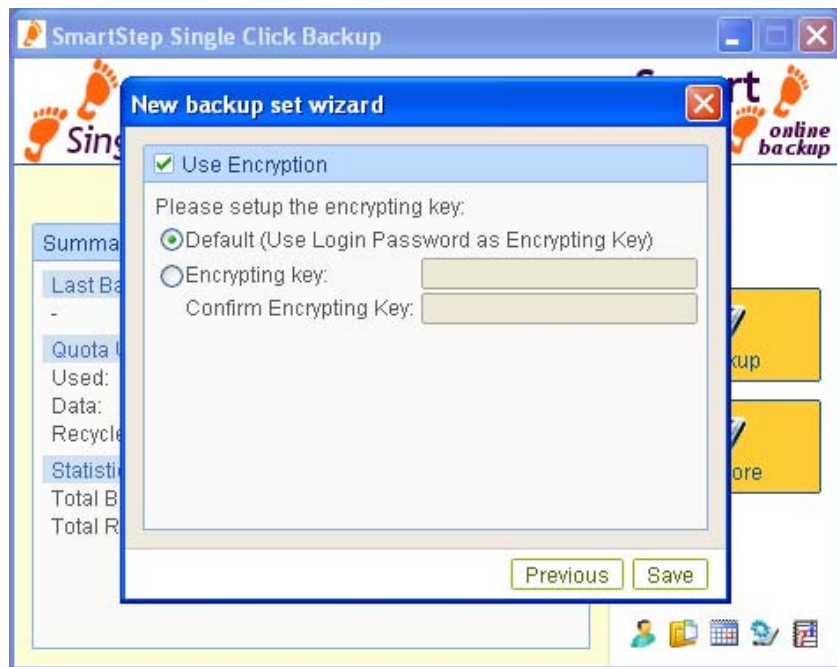




After selecting files for backup, select a backup schedule and click "Next".

Most users should select the default encryption setting, "Use Login Password as Encrypting Key". If you choose something different then you must remember both your password and encryption key.

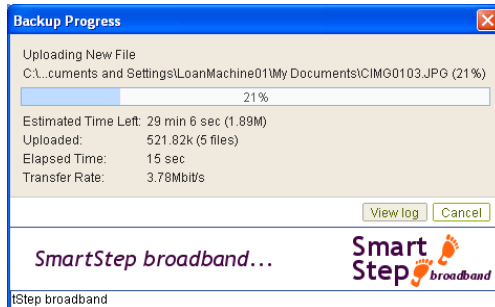
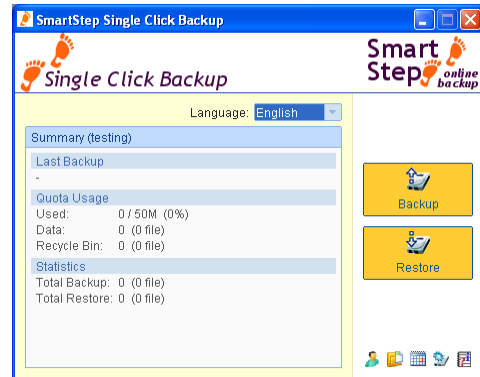
The software is now configured to back up in accordance with the set schedule.



Running a manual backup

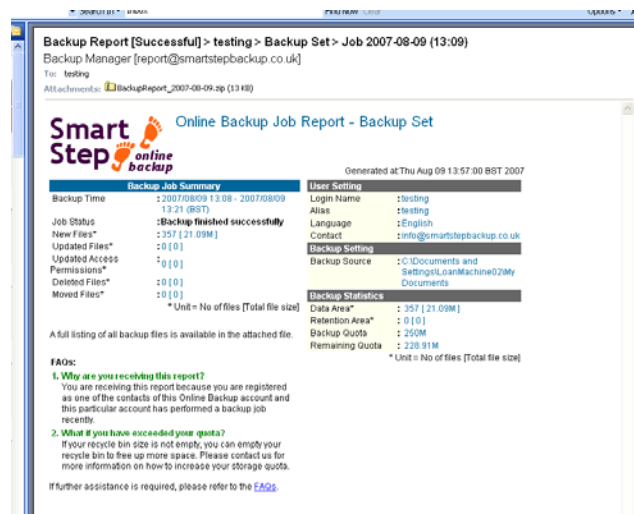
To run a backup now, click the "Backup" button on the right hand side.

You will see a progress bar showing the status of the backup. The initial backup may take a significant length of time. You can use the online calculator, <http://www.smartstepbackup.co.uk/uploadcalculator>, to estimate the time your initial backup will take.



The progress bar will go to 100% upon completion and you will be returned to the main window.

Depending on configuration, you will receive an email notification informing you of a successful backup.



Schedule backups

If a scheduled back up is missed, you will receive an email informing you of this.

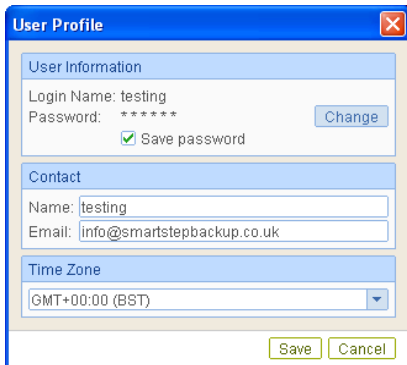
Shutdown backups

When you shutdown your computer you can be reminded to take a backup. By default this setting is on. You can change this setting in the "Backup settings".

Note

Your internet service provider may place bandwidth limits on your usage and if you exceed your quota you may be charged by them. Note that your backups will contribute to your usage quota.

Software configuration



User Profile

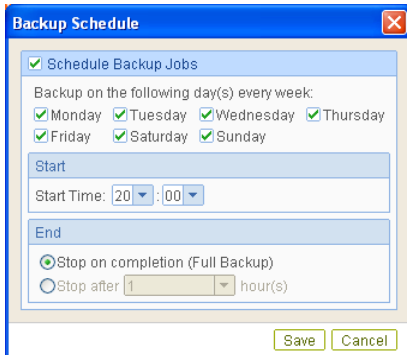
User Information
Login Name: testing
Password: *****
 Save password

Contact
Name: testing
Email: info@smartstepbackup.co.uk

Time Zone
GMT+00:00 (BST)

User Profile

Here you can change your Name, Email, Password and Time Zone. If you change your password you must remember that your encryption key will remain as it was before. You must remember your encryption key.



Backup Schedule

Schedule Backup Jobs

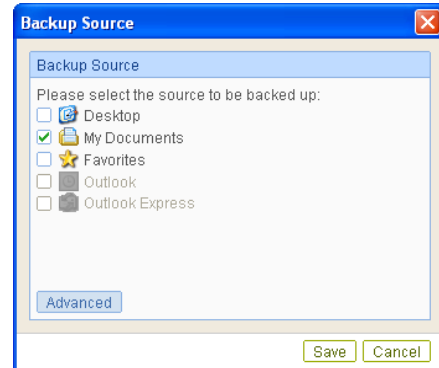
Backup on the following day(s) every week:
 Monday Tuesday Wednesday Thursday
 Friday Saturday Sunday

Start
Start Time: 20:00

End
 Stop on completion (Full Backup)
 Stop after 1 hour(s)

Backup source

Select the files you wish to be backed up. Use the "Advanced" button to select files and folders.



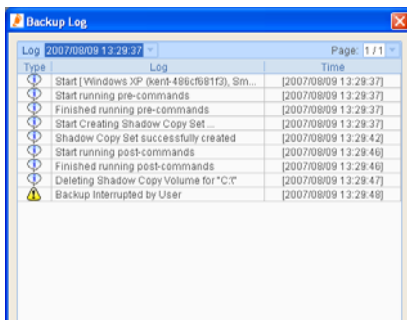
Backup Source

Please select the source to be backed up:

Desktop
 My Documents
 Favorites
 Outlook
 Outlook Express

Backup Schedule

Here you can change the schedule of backups.

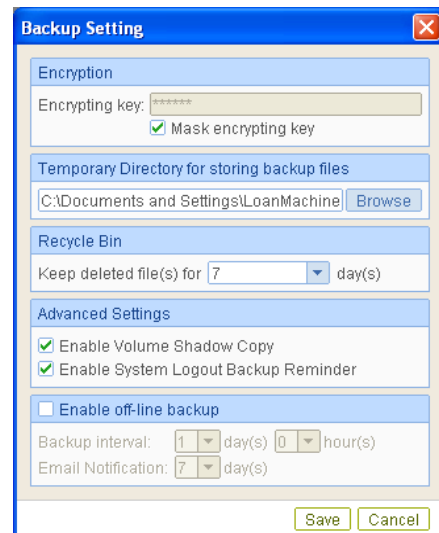


Backup Log

Type	Log	Time
Start	(Windows XP (xent-486cf81f3), Sm...	[2007/08/09 13:29:37]
Start	running pre-commands	[2007/08/09 13:29:37]
Finished	running pre-commands	[2007/08/09 13:29:37]
Start	Creating Shadow Copy Set	[2007/08/09 13:29:37]
Shadow	Copy Set successfully created	[2007/08/09 13:29:42]
Start	running post-commands	[2007/08/09 13:29:48]
Finished	running post-commands	[2007/08/09 13:29:48]
Deleting	Shadow Copy Volume for "C:"	[2007/08/09 13:29:47]
Warning	Backup Interrupted by User	[2007/08/09 13:29:48]

Backup settings

Note you are unable to change your encryption key once a backup set has been created. This is because the backup set has been created using this key. You can turn off the Logout Backup Reminder feature.



Backup Setting

Encryption
Encrypting key: *****
 Mask encrypting key

Temporary Directory for storing backup files
C:\Documents and Settings\LoanMachine\ Browse

Recycle Bin
Keep deleted file(s) for 7 day(s)

Advanced Settings
 Enable Volume Shadow Copy
 Enable System Logout Backup Reminder
 Enable off-line backup

Backup interval: 1 day(s) 0 hour(s)
Email Notification: 7 day(s)

Backup Log

Displays a log of backup and restore activity.

Backup files

Your backup files are stored in an encrypted form on our remote servers. Your files are only visible to those with your encryption key. It is vital to remember your password and encryption key. If you change your password and were using that for the encryption key (this is the default setting) you must remember your original password as this will be required for restoring files. We accept no responsibility for inability to restore files due to an incorrect encryption key.

Restoring files

Please refer to the "Guide to restoring files" or the complete user manual.